

'SRIWIN' 15kV VACUUM CONTACTOR



SALIENT FEATURES:

- Compact and Light Weight
- Robust Construction
- Highly Shock Resistant
- Flexible Auxiliary voltages
- Suitable for frequent switching applications
- Utilisation Category: AC-3/AC-4
- Electrically Latched Solenoid Operating Mechanism
- Magnetic Actuator Mechanism – Optional
- Assured Mechanical Life of 3 Lakh operations
- Suitable for installation in Indoor/Outdoor Metal-clad/Metal-enclosed Switchgear
- Suitable for Fixed Version as well as for Draw-out Version

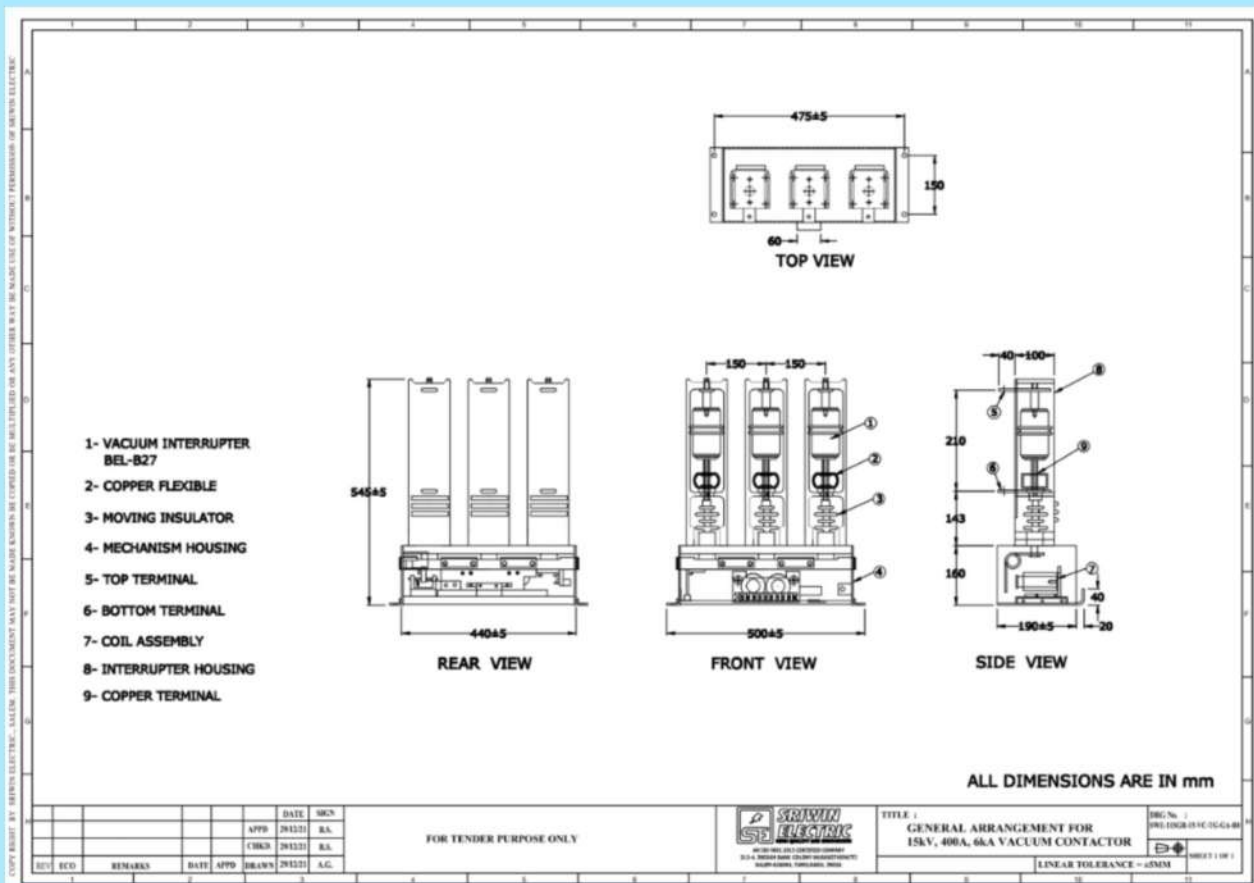
APPLICATIONS:

- Switching of three-phase induction motors
- Switching of transformers
- Switching of Reactors
- Switching of Capacitors – with APFC Control
- Switching of Resistive Loads
- Any other special applications

GUARANTEED TECHNICAL PARTICULARS

Parameter	Unit	Value
Type		BSV 15
Rated Voltage (Ur)	kV	15
Rated Frequency (fr)	Hz.	50/60
Rated Operational Current (Ie)	A	400
Rated Lightning Impulse Withstand Voltage (Up)	kVpeak	95
Rated One Minute Power Frequency Withstand Voltage (Ud)	kVrms	38
Rated Short Time Withstand Current (Ik)	kA	6
Rated Short Time Withstand Duration (tk)	Sec.	1
Rated Making Capacity	A	4000
Rated Breaking Capacity	A	3200
Operating Frequency	Cycles/Hour	120
Mechanical Life	Operations	300000
Electrical Life	Operations	200000
Rated Control Voltage	Vdc	110 / 220
Aux. Contacts	N.O. + N.C.	2 + 2
Type of Latching Mechanism		Electrical
Applicable Standard		IEC 62271-106

TYPICAL GENERAL ARRANGEMENT DRAWING



**Note: Product Improvement is a continuous process at SRIWIN ELECTRIC.
Please contact us for latest update on the product**

Office Address:

SRIWIN ELECTRIC,
212-4 Indian Bank Colony,
Narasothipatti, Salem-636004,
Tamil nadu, India.

Ph: +91 94434 24700
+91 90805 37051

Factory Address:

Plot No 61&73 - Women's Industrial Estate,
NH-7 Salem to Bangalore Highway,
Behind Govt.Engg College,
Karupur, Salem - 636 011,
Tamil nadu, INDIA.

sri@sriwinelectric.com
info@sriwinelectric.com
marketing@sriwinelectric.com



SCAN QR CODE